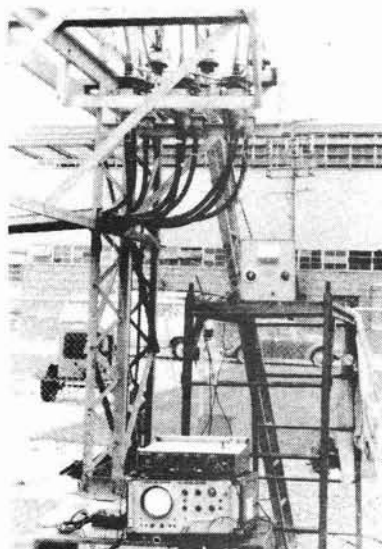


B&A

the electrical digest

Edited by H. G. Brosz, P.Eng.

CABLE FAULT LOCATING



The hunt begins. Close circuit radar analyzers are attached to the cables.

Brosz & Associates work around the clock responding to calls requesting Cable Fault Locating. Using the best equipment, such as Closed Circuit Radar Analyzers and TDR systems, Brosz & Associates are able to locate faults quickly and accurately. Recently, a major car manufacturer experienced a fault in a 13.8 KV feeder to a substation. They were able to continue operations, but in order to maintain safety in production, the fault on the main line needed to be located.

The cable fault was difficult to find. It took almost 20 hours. High voltage thumper equipment could not be used because of possible damage to the cables located on either side of the major cable.

Brosz & Associates had to burn the fault down so it could be seen with radar systems and confirmed with low energy thumping techniques.

The fault was located in a junction box filled with bird nesting material, already scorched by the original fault. Had high voltage thumping taken place, it would have ignited the



After many hours, the fault is located surrounded by bird nestings.

nesting, burning up adjacent cables. Brosz & Associates saved the company thousands in cable costs by exercising expert methods.

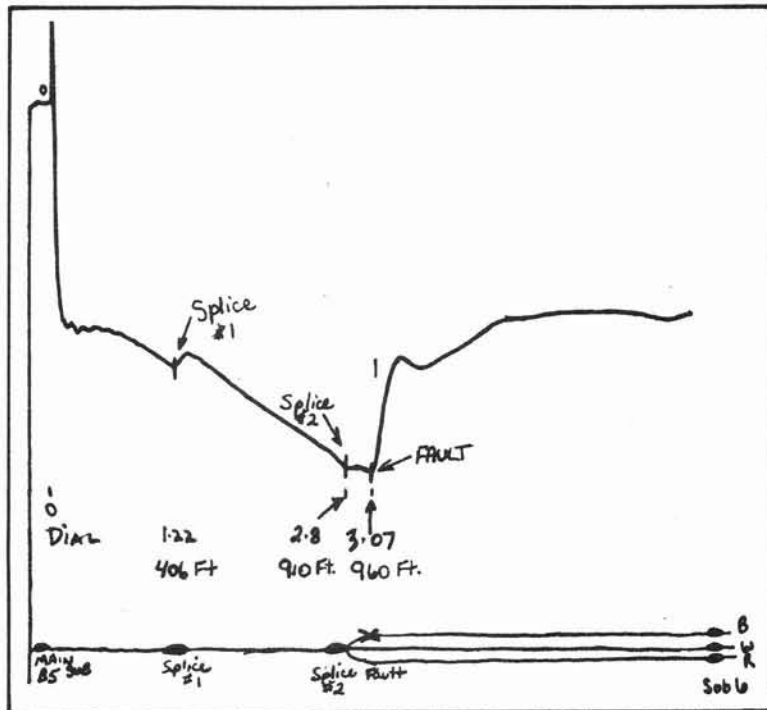
At a utility company in Southwestern Ontario, three different companies tried and failed to locate a fault in a PILC cable. Brosz & Associates proved their determination and expertise by walking the mile long cable and after three days, locating the fault under a railway track.

(Please see over)

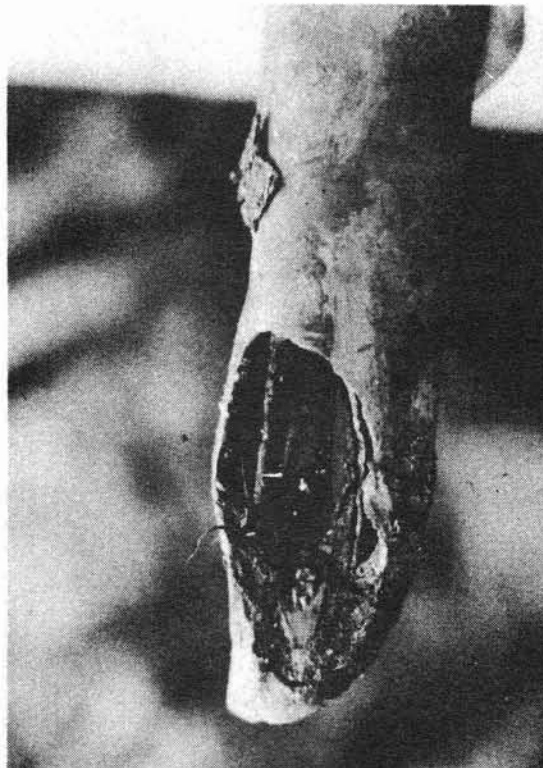


ON THE JOB . . . CABLE FAULT LOCATING & FAULT ANALYSIS

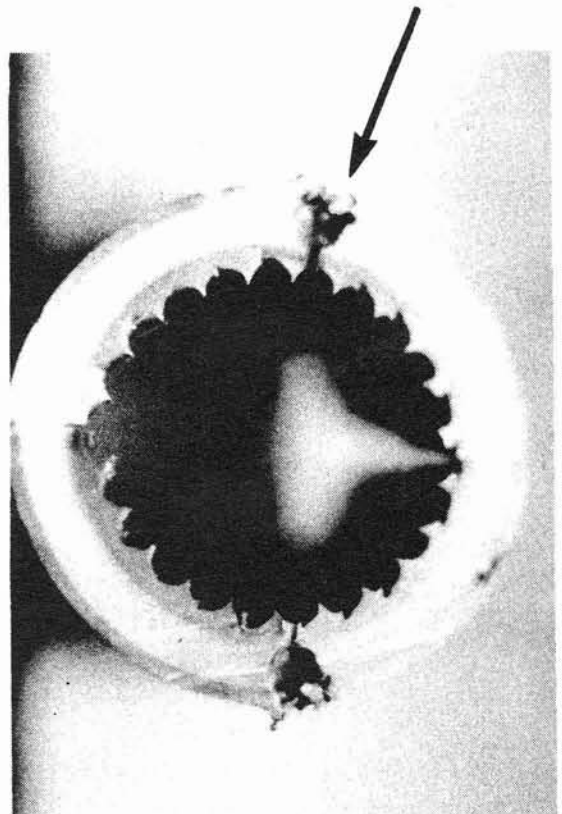
(Continued)



Close circuit radar graphs illustrate to engineers the splices in the cable and its fault location. The length and distances of the cable are also shown on the graph.



Engineers get a closer look at the cable once the fault is located and dug from the ground.



This cross-section of a pinhole cable fault made the fault clearly visible to both engineers and electricians. Cause of fault — large void.